

State of Mississippi  
Department of Archives and History  
P.O. Box 571  
Jackson, MS 39205

HISTORIC RESOURCES INVENTORY

1.a. Property Name, Historic		14. MDAH Inventory Code 052
1.b. Property Name, Common Merchant's and Farmer's Bank		15. County Lafayette
2. Property Address 1111 Jackson Avenue		16. City Oxford
3. Legal Description 86Q:26		20. USGS Quad Map
19. Ownership private	22. Condition fair	21. UTM Reference
4. Former/Historic Uses	5. Present Use bank	24. Principal Materials brick
6 & 7. Significant persons, events, themes, including dates of association		
8. Date of Construction ca. 1975	9. Historic Changes	23. Post Historic Changes
10. Architect	11. Builder/Contractor	25. Architectural Style

13. Outbuildings or Secondary Features (use sep. form if important)

12. Brief Description: One-story, three-bay brick veneer commercial building with Second Empire Revival influence, built in ca. 1975. Flat roof covered with built-up asphalt roofing, with a Mansard roof covered with slate roofing, and a corbeled cornice. Side facade features a two-bay drive-through banking wing, with a flat roof supported by metal poles. Street level features three-light, single-panel, fixed double doors topped with four-light transoms and flanked by three-quarter length sidelights.

30. Historical Information:

31. Historical Contexts:

33. Sources of Information:

32. Additional Remarks or Information: #12, cont'd: The entrance contains a three-light, single-panel double-door topped with a four-light transom and flanked by three-quarter length sidelights.

35. Owner's Name and Address

36. Photographer/Source  
John Hopkins

37. Photo Roll/Frame  
3552:12

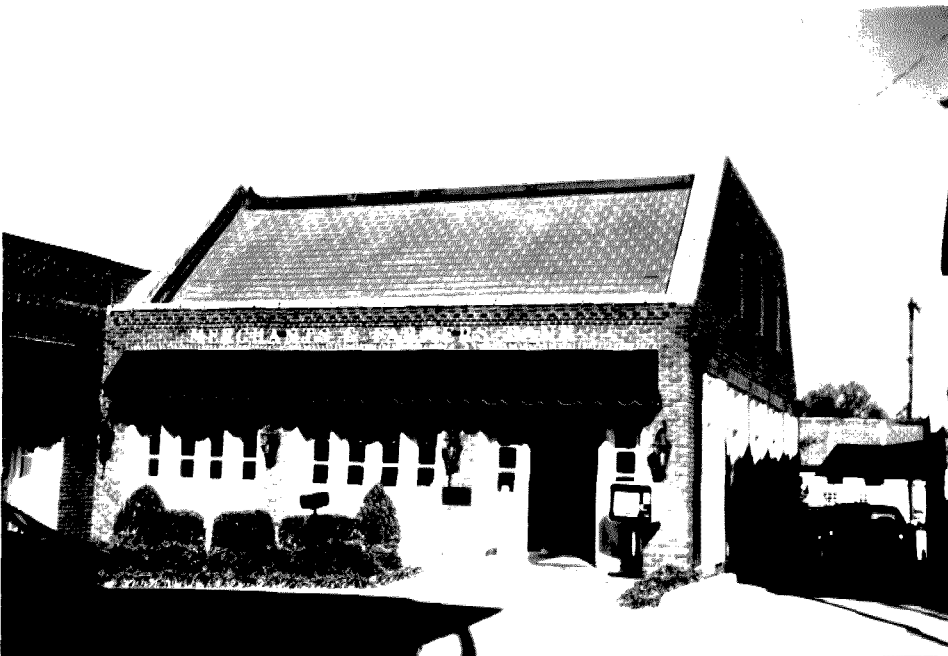
38. Photo Date  
January, 2000

39. Form by Hopkins & Associates, Memphis, TN

40. Survey Project Oxford

Date of Form January, 2000

Attach Photograph



MDAH INFORMATION

26. Category

27. Functional Type

28. Registration Status/Dates  
 NHL  
 Listed NR  
 In NR District  
 Federal DOE  
 State Landmark  
 Local Landmark  
 In Local District  
 HABS/HAER

29. District Name  
 Oxford Courthouse Sq.  
 Rating C/N N  
 Inventory # 52

42. Other HPD Information

43. Evaluation  
 a. Already Listed NR  
 Individually Eligible  
 Eligible if Restored  
 Contribute to District  
 Apparently Not Eligible  
 Insufficient Information  
 Not Extant

b. Area(s) of Significance

c. Evaluated by/date

